

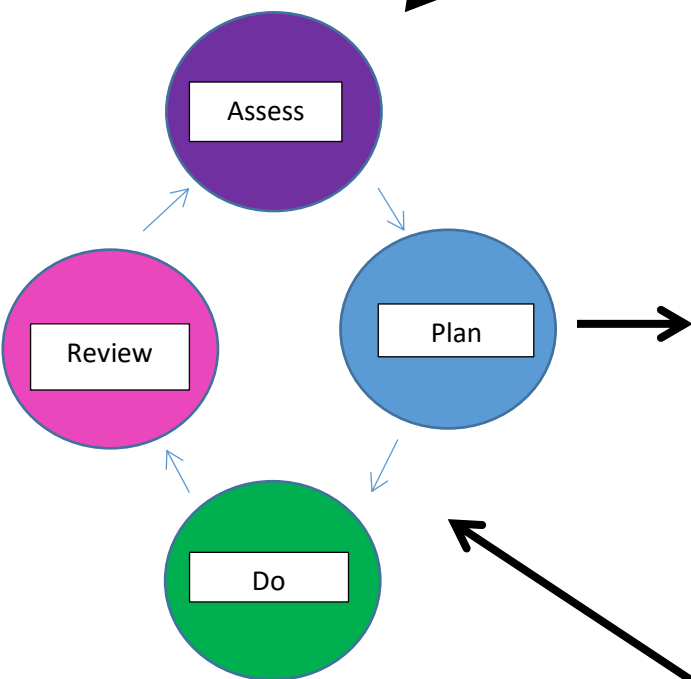
Friezland School's Response to Emotional Health and Wellbeing Concerns



Child shows signs and symptoms (see policy)/ concern raised by school staff, family, friend or other professional.

Information to be gathered by CT if possible and appropriate. Possible involvement/advice sought from EHMW lead and meeting set up to discuss actions to be taken. These will be recorded on a EHWB Support Map, if the child requires a lot of selected and or targeted support.

An agreed amount of time later (possibly 6 weeks) EHMW Support Map to be reviewed with parents/appropriate people. Has what has been put in place helped? Does this support need to change, continue or increase? Do they still need to have an EHMW Support Map? Have the concern/signs/symptoms increased? Are there any new concerns? Does the child or family need to be signposted to an appropriate outside agency support service? Does an Early Help referral need to be made? Is this impacting on how they access the curriculum? Does the child need to put on the SEND register?



If at any point there is a safeguarding concern, then all school staff should follow school's safeguarding procedure, which is to go straight to the designated safeguarding officer.