

**Information for Parents and Carers**  
**Class 1: Spring Term 1**

**“What can we find in space?”**

The focus of this half term’s work is learning about the planets in our Solar System and the man-made objects we find in space. The children will learn the key vocabulary planet, sun, moon, star, satellite, and shuttle.

**Personal, Social and Emotional Development**

This term we are focussing on naming and describing our feelings and emotions. In our Think Equal sessions, we are learning about empathy and how we can regulate our feelings and bodies.



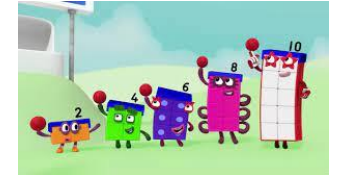
**Communication, Language and Literacy**

In Phonics we will continue to learn about digraphs (2 letters which make 1 sound) and are working hard to blend sounds together to help us read words. We will use non-fiction books to find out about space and use the story, ‘How to catch a star’ to help us create and describe our own star.



**Mathematics**

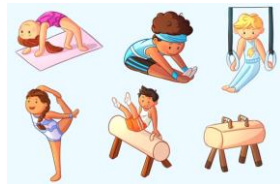
In Maths we will be continuing to use the Numberblocks to help us learn about odd and even numbers. We will begin to learn about subtraction as taking objects away and learn positional language.



**Physical Development**

This term our PE sessions are indoors for gymnastics (Tuesday).  
In Forest Fun we are finding out about garden birds and creating natural art pictures (Friday).

**Please ensure that your child always has their indoor PE kit and wellies in school as days can change because of poor weather.**



**Understanding the World**

Throughout our topic work we will learn the names of the planets in our solar system and explore space. We will find out about how to look after the environment and our planet Earth and learn about how humans have travelled to space.



**Expressive Arts and Design**

Our Art topic focusses on craft when we will create our own planets using collage techniques. In DT we will be finding out about Spring flowers and creating a flower threading.

Our music topic is called ‘Our World’ in which we will explore listening to music.

This term our role play is a space shuttle.



**Ways in which you can help at home**

\* Listening to your child read every night and practice reading the ‘Harder to Read and Spell Words.’

\* Complete the challenges on Mathletics (log-in details in reading record).

**Class 1 Dates for your diary:**

\* 14<sup>th</sup> Feb – Freddy Fit visit

\* 16<sup>th</sup> Feb – Break up for February half term.