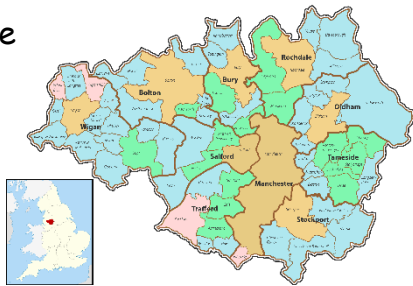


Home Learning Challenges. Class 3 - Summer Term, 2024

Fact file

Can you complete a factfile about either the village you live in, Oldham or Manchester 😊



ALPHIN'S WALK



Start/End: Robert Scott (OL3 7HG)
Rating: Hard

From Manchester Road, turn on to Friezland Lane.

Continue uphill on Friezland Lane and bear left on to Intake Lane.

Continue until you reach a gravel path on your right. Follow this uphill to a trig point.

You've reached Alphin Pike!

Cities in the UK

Can you draw a map of the UK and using an Atlas mark on the major cities in the UK. You could even draw grid refernces and complete a table naming the cities with the grid refernces at the side!



RIMMON'S WALK



Start/End: Dove Stone Car Park (OL3 7NE)
Rating: Easy

Take a stroll along the water's edge. The path is clearly marked and goes all the way around the reservoir.

This route is suitable for wheelchairs & pushchairs, though there are some steeper sections.

Can you see any flashes of Rimmon in the water?

- Choose a minimum of 3 activities to complete each half term.
- How can you **present** your learning?
- Can you use ICT to help you?
- Be creative!
- Mrs Power can't wait to see what you have created!

Have fun!

AIDERMAN'S WALK



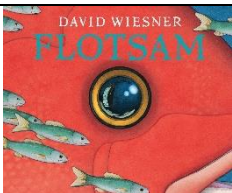
Start/End: Kinders Lane (OL3 7BQ)
Rating: Hard

Follow Kinders Lane uphill and then bear left on to Haw Clough Lane.

Continue uphill on to Knowl Top Lane.

Take a marked public footpath on the right which leads to Pots and Pans.

You've made it to Alderman's Hill!



Write: Following on from the lesson where we learn about a character's 'back story' and the 'Flotsam' discovered, can you write a short back story for a character of your choice? You can do it as a comic book or type it up on the computer as a story.

WIMBERRY ROCKS



Start/End: Dove Stone Car Park (OL3 7NE)
Rating: Medium

Wimberry Rocks can be seen from various points at Dove Stone, including the main path around the reservoir.

You can reach the foot of the rocks by walking through the forest beyond the sailing club boat store.

Can you see Alphin's face carved in the rocks?

Animation

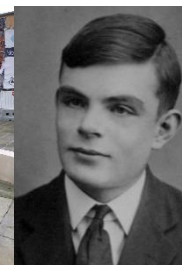
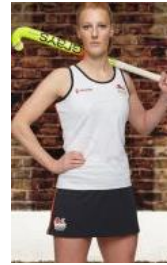
Can you create your own form of animation? Will it be paper based or computer animated? How will you present your animation to the rest of the class?





Draw: Can you research and draw any of the famous landmarks in Greenfield, Oldham or Manchester and write a short paragraph about where you would find this landmark and why it's important?

Research Can you write a non-chronological report about a famous person from either Saddleworth, Oldham or Manchester? Think about who inspires you 😊



Quiz



Can you create a quiz for your friends to play which helps them to learn the major cities in the UK?

Research

Can you find information about any local sculptures?

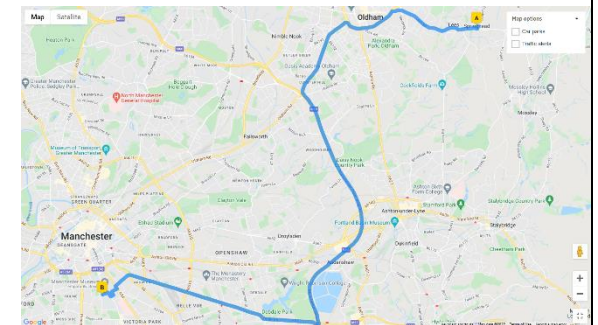
Who created them?

How will you present your research? As a mini project with writing and drawings, photographs, by creating a PowerPoint?



Map reading

Using a map of Greater Manchester, use a felt tip pen and plan a route of how you would drive to Manchester and what roads you would travel along. You could write them out like a human SAT nav 😊 If you want a Map printing send a message on Google classroom and we'll print one out for you.



Grow! - a cress head

Sprinkle a teaspoon of cress seeds (you can buy these from a garden centre) onto wet cotton wool and press them down gently with your finger. Place the cress heads in a warm, light place (windowsill), and wait for your seeds grow! Recycled yoghurt pots or egg shells are great for this!



Plant Identification

Whilst out on one of the local area walks on the front page, how many different plants can you spot?

Take photographs of them as you go and use the internet to find out what they are called.

